

# Rudolph The Red-Nosed Reindeer



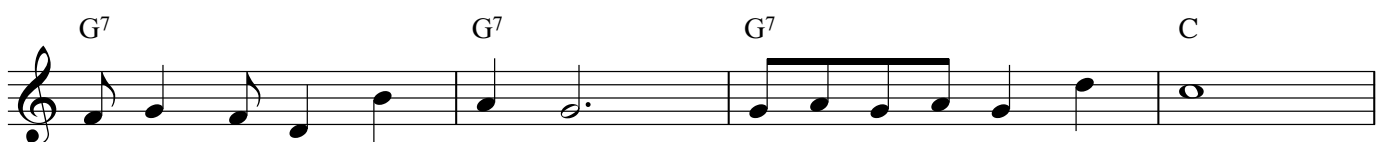
Ru-dolph the Red-nosed Rein-deer had a ve-ry shi-ny nose.



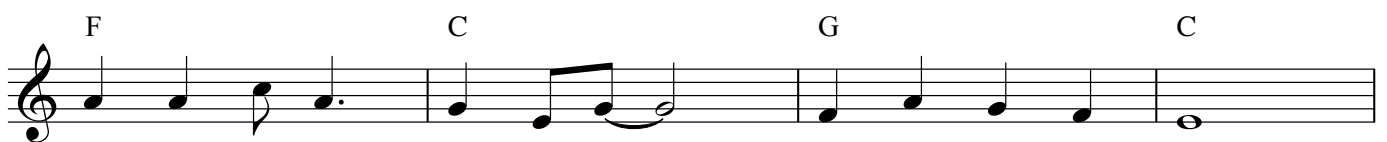
And if you ev-er saw it, you wouldr ev-en say "it glows!"



All of the oth-er rein-deer used to laugh and call him names.



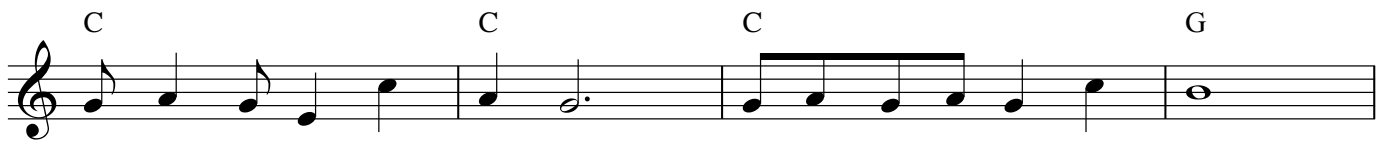
They ne-ver let poor Ru-dolph join in a-ny rein-deer games.



Then one fog-gy Christ-mas Eve... San-ta came to say:



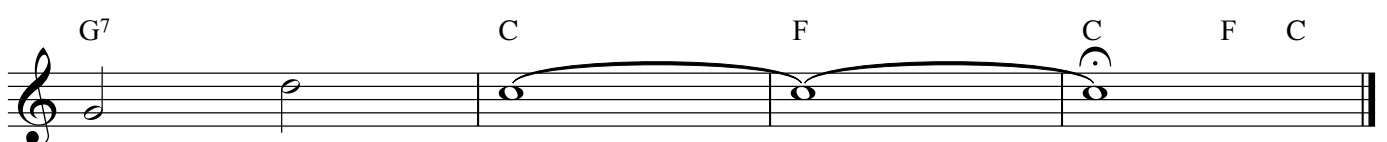
"Ru-dolph with your nose so bright, won't you guide my sleigh to night?"



Then how the rein-deer loved him, and they shout-ed out with glee:



"Ru-dolph the Red-nosed Rein-deer, you'll go down in



his-to-ry!"